

# AS64AN02T-A

EN Instruction Sheet  
TR Bilgi Dökümanı  
TW 安裝說明  
CN 安装说明



5014035103



- EN **✎** This is an OPEN TYPE module and therefore should be installed in an enclosure free of airborne dust, humidity, electric shock and vibration. The enclosure should prevent non-maintenance staff from operating the device (e.g. key or specific tools are required for operating the enclosure) in case danger and damage on the device may occur.
- FR **✎** Ceci est un module ouvert et il doit donc être installé dans un coffret à l'abri des poussières, des vibrations et ne pas être exposé aux chocs électriques. Le boîtier ou l'armoire doit éviter toute action d'un personnel autre que celui affecté à la maintenance de l'appareil (par exemple, clefs, outils spécifiques pour l'ouverture du coffret), ceci afin d'éviter tout accident corporel ou endommagement du produit).
- TR **✎** Bu ürün AÇIK TİP bir modül olup toz, rutubet, elektrik şoku ve titreşimden uzak kapalı yerlerde muhafaza edilmelidir. Yanlış kullanım sonucu ürünün zarar görmesini önlemek için yetkili olmayan kişiler tarafından ürüne müdahale edilmesini önleyecek koruyucu önlemler alınmalıdır. (Ürünün bulunduğu panoya kilit konulması gibi).
- TW **✎** 本機為開放型 ( OPEN TYPE ) 機種，因此使用者使用本機時，必須將之安裝於具防塵、防潮及免於電擊衝擊意外之外殼配線箱內。另必須具備保護措施 ( 如：特殊之工具或鑰匙才可打開 ) 防止非維護人員操作或意外衝擊本體，造成危險及損壞。
- CN **✎** 本机为开放型 ( OPEN TYPE ) 机种，因此使用者使用本机时，必须将其安装于具防尘、防潮及免于电击/冲击意外的外壳配线箱内。另必须具备保护措施 ( 如：特殊的工具或钥匙才可打开 ) 防止非维护人员操作或意外冲击本体，造成危险及损坏。

EN Please refer to the AS Series Hardware and Operation Manual for more information

TR Daha fazla bilgi için lütfen AS Serisi Donanım ve Kullanım Klavuzuna bakınız.

TW 詳細資料請參考 AS 系列硬體及操作手冊

CN 详细资料请参考 AS 系列硬件及操作手冊

EN Assembly

TR Montaj

TW 安裝

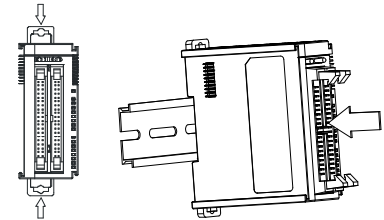
CN 组装

EN Clip up the two DIN rail clip on the module. Parallel the module groove on the back to the DIN rail, then push and slide along until hearing a click.

TR Modül üzerindeki iki DIN ray klipsini dışa doğru çekin. Alttaki modül oyuğunu DIN ray ile paralel konuma getiriniz ve sonra klik sesini duyana kadar klipsleri içe doğru bastırın.

TW 將模組上下方的兩個 DIN 軌固定扣往中間壓後，將模組後方勾槽平行對準 DIN 軌並往 DIN 軌壓直到喀一聲，即完成。

CN 将模块上下方的两个 DIN 轨固定扣往中间压后，将模块后方勾槽平行对准 DIN 轨并往 DIN 轨压直到喀一声，即完成。



EN Output

TR Çıkış

TW 輸出

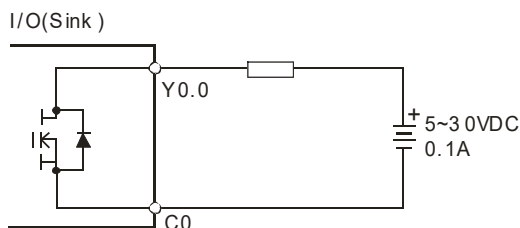
CN 输出

EN Output wiring, 5~30VDC, 0.1A, 64-point output, transistor(SINK)

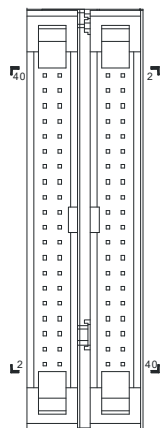
TR Çıkış bağlantısı, 5~30VDC, 0.1A, 64-nokta çıkış, transistör(SINK)

TW 輸出接線，5~30VDC · 0.1A · 64 點輸出，電晶體 ( 漏型 )

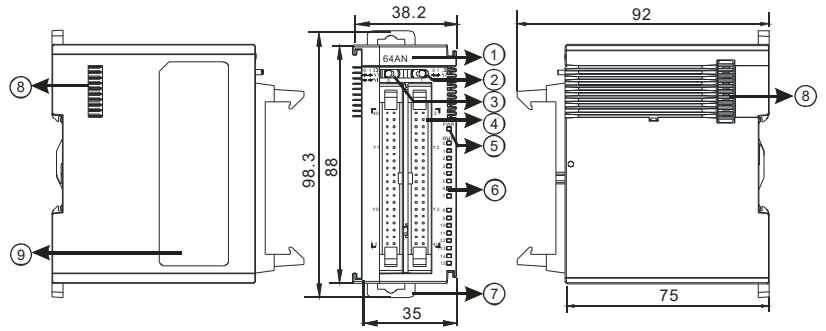
CN 输出接线，5~30VDC · 0.1A · 64 点输出，晶体管 ( 漏型 )



-	-	2.0	2.1
C0	C0	2.2	2.3
1.15	1.14	2.4	2.5
1.13	1.12	2.6	2.7
1.11	1.10	2.8	2.9
1.9	1.8	2.10	2.11
1.7	1.6	2.12	2.13
1.5	1.4	2.14	2.15
1.3	1.2	C1	C1
1.1	1.0	-	-
-	-	3.0	3.1
C0	C0	3.2	3.3
0.15	0.14	3.4	3.5
0.13	0.12	3.6	3.7
0.11	0.10	3.8	3.9
0.9	0.8	3.10	3.11
0.7	0.6	3.12	3.13
0.5	0.4	3.14	3.15
0.3	0.2	C1	C1
0.1	0.0	-	-



EN Dimensions(mm) & Product Profile  
 TR Ölçüler(mm) & Ürün Görünüşü  
 TW 尺寸 ( mm ) 及產品外觀  
 CN 尺寸 ( mm ) 及產品外觀



EN	TR	TW	CN
1 Model name	Model adı	機種名稱	机种名称
2 LED switch 1	LED anahtarı 1	LED 開關 1	LED 开关 1
3 LED switch 0	LED anahtarı 0	LED 開關 0	LED 开关 0
4 MIL connector	MIL konektör	牛角座連接器	牛角座连接器
5 Power indicator	Besleme göstergesi	電源指示燈	电源指示灯
6 Output LED indicator	Çıkış LED göstergesi	輸出指示燈	输出指示灯
7 DIN rail clip	DIN ray klipsi	DIN 軌固定扣	DIN 轨固定扣
8 Extension communication port	Genişleme modülü iletişim portu	擴充模組通訊埠	扩充模块通讯端口
9 Label	Etiket	標籤	标签
EN Wiring	TR Bağlantı	TW 配線	CN 配线

EN I/O extension cable UC-ET010-24D / UC-ET020-24D / UC-ET030-24D

External terminal module UB-10-OR16A(mm)

TR I/O ilave kablosu UC-ET010-24D / UC-ET020-24D / UC-ET030-24D

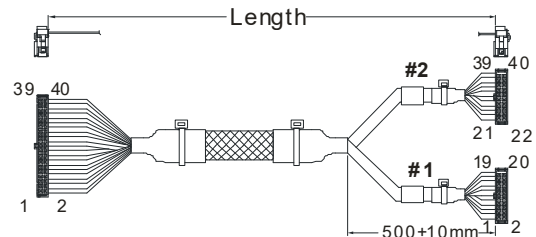
Harici terminal modülü UB-10-OR16A(mm)

TW I/O 連接線 UC-ET010-24D / UC-ET020-24D / UC-ET030-24D

I/O 配線模組 UB-10-OR16A(mm)

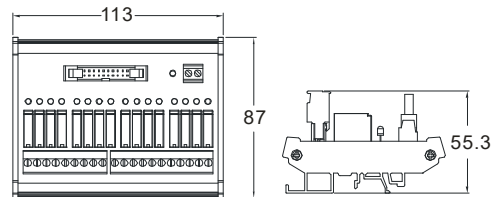
CN I/O 连接线 UC-ET010-24D / UC-ET020-24D / UC-ET030-24D

I/O 配线模块 UB-10-OR16A(mm)



Length:

UC-ET010-24D(1M)  
 UC-ET020-24D(2M)  
 UC-ET030-24D(3M)



部件名称 Part Name	有害物质-Hazardous Substances					
	铅 (Pb)	汞 (Hg)	镉 (Cd)	六价铬 (Cr VI)	多溴联苯 (PBB)	多溴二苯醚 (PBDE)
金属部件 Metal Part	X	O	O	O	O	O
塑料部件 Plastic Part	O	O	O	O	O	O
电子件 Electronic	X	O	O	O	O	O
触点 Contacts	O	O	X	O	O	O
线缆和线缆 附件 Cable & Cabling accessories	X	O	O	O	O	O
电池 Battery	O	O	O	O	O	O

本表格依据 SJ/T 11364 的规定编制。  
 O: 表示该有害物质在该部件所有均质材料中的含量均在 GB/T 26572 规定的限量要求以下。  
 X: 表示该有害物质至少在该部件的某一均质材料中的含量超出 GB/T 26572 规定的限量要求。

This table is made according to SJ/T 11364.  
 O: Indicates that the concentration of hazardous substance in all of the homogeneous materials for this part is below the limit as stipulated in GB/T 26572.  
 X: Indicates that concentration of hazardous substance in at least one of the homogeneous materials used for this part is above the limit as stipulated in GB/T 26572.