



### Introduction

FBs-CBEH is one of the communication boards of FBs series PLC. Being an expansion board of Fatek PLC, there's no extra space required to accommodate it. With this board, FBs-PLC can act as a client or a server over the Ethernet. Thus can serve the purpose of remote monitoring and diagnostic of PLC.

While operating, it will utilize the port1 and port2 of CPU communication port. The working mode of port1 is fixed as Fatek slave and can be used for ladder program editing or debugging while the port2 can be configured as Modbus-TCP server or client or Fatek client.

Besides the above basic functions, FBs-CBEH also built in a Web-Server. Which not only provides the user the ability to setup the configuration via Web-browser but also give user the opportunity to create its own Web-page that can facilitate the operator to monitoring or control the PLC via internet.

Network configuration setup is a cumbersome and technical task for the user while installation, especially when the IP address is dynamic. The *service call back* function provided in this product can alleviate this difficulty. In most cases user can even don't need to perform the configuration task when use this product.

When a certain event occurs for the control system and need to notify the stuff people away from the spot, then the built-in *Send Email* function can be a solution. For quick response, SMS(Text) notification is also possible if the *Email to SMS* service is applicable.

### Feature

- Multi-client accessible
- Modbus Server or Client operation mode
- Fatek Server and Client\*1 operation mode
- IP-based access control
- Built-in Web server
- Configuration setup via Web browser
- User can create own customized web-page by using the companion tool – EasyWeb Designer
- *Service call back* function , eliminate the cumbersome network setup task
- *Network clock*(SNTP) function, eliminate the periodic time adjustment task
- *Send Email* function, with this function send SMS message is possible via the *Email to SMS* internet service.

### Specification

**Network interface**-10/100BaseT

**Network protocol** -TCP/IP, ARP, ICMP

**Application protocol** -FATEK, Modbus/TCP, HTTP, DHCP, DNS, SNTP, SMTP, NetBIOS.

**PLC interface**- Port1,Port2

**PLC interface speed**- 307.2Kbps

**Operating mode**- Server and client

**Storage capacity for Web server**- 1.8M Byte

**Max. customized web-page count**- 100 pages

**Web access authentication method**- Password

**Application ports**- Modbus-TCP – 502, FATEK – 500, HTTP – 80 or configured by user.

**Security mechanism** – IP-based access control

**Configuration methods**- via Ethernet with utility program or Web-browser

**Firmware update method** – via Intranet

**Network Indicators**- RX,TX and LINK LED

**Connector** – RJ45

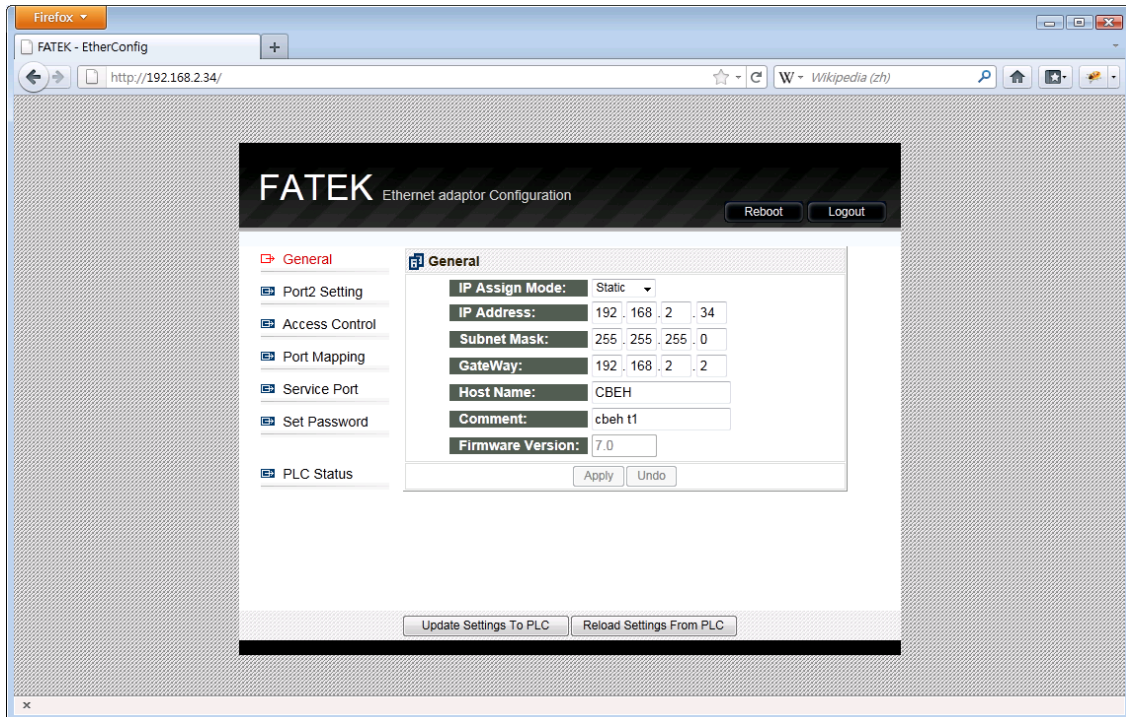
**Power consumption** - 5V, 150mA

**Operating temperature**- 0 ~ 60 °C

**storage temperature** - -20 ~ 80 °C

## Screenshot of browser

### Configuration setup for CBEH board



### Customized Web-page created by using *EasyWeb Designer* tool

